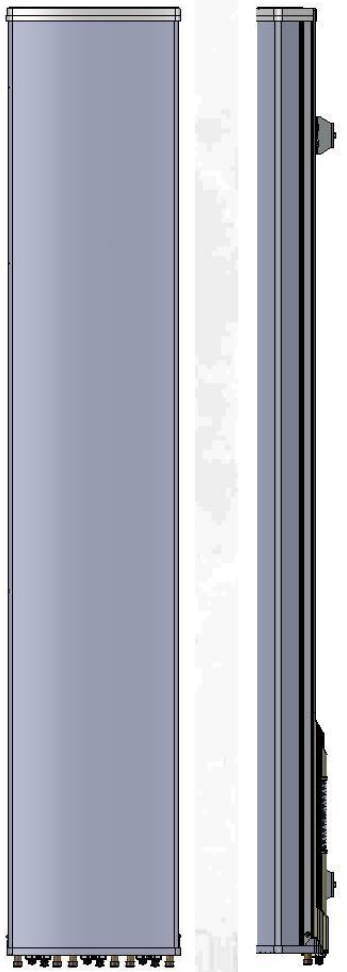


# Hex-Port Antenna

## CMA-UBTLBHH/6517/21/21

XXX-Pol 698-960 / 1710-2690 / 1710-2690



### Electrical specification:

Frequency range per input (MHz)	2 x 698-960		4 x 1695-2690		
	698-896	880-960**	1710-1880	1920-2170	2490-2690
Frequency band definitions (MHz)					
Polarization	Dual linear $\pm 45^\circ$		2 x Dual linear $\pm 45^\circ$		
Gain (dBi)	16.8	16.9	19.4	19.8	21.1
Horizontal = 3 dB beamwidth ( $^\circ$ )	67	70	66	67	55
Vertical = 3 dB beamwidth ( $^\circ$ )	9.5	8.1	4.9	4.4	3.5
Adjustable electrical downtilt	2° - 10°		1° - 10°		
Front to back ratio (dB)	>24		>25		
First upper sidelobe suppression	2°, 6°, 10° >17, >17, >18		1°, 6°, 10° >16, >17, >13		
First nullfill below horizon (dB)	-		<27		
Cross-polar discrimination +/-0° (dB)	>25		>18		
VSWR	<1.5:1		<1.5:1		
Isolation between inputs (dB)	>28		>28		
Isolation between bands (dB)			>28		
Antenna Efficiency*	90 %		90 %		
Inter modulation, IM3 (dBc)			>155 @2x43 dBm		
Nominal impedance			50 $\Omega$		
Max power per input			500 W		

### Mechanical specification:

Connectors	6 x 4.3 -10 female
Connector position	Bottom
Lightning protection	DC grounded
Height/Width/Depth mm (inch)	2197 (86.5)/ 420 (16.5)/ 192 (7.6)
Antenna weight kg (lb)	33 (74)
Wind load at 42 m/s (94 mph)	
Frontal:	1022 N
Lateral:	258 N
Survival wind speed	67 m/s
Colour radome	Light Grey, RAL 7035
Radome material	ASA

### Mounting hardware:

Mounting bracket	2
Bracket weight (complete)	5 kg (11 lb)
Pole diameter	45-120 mm
Tilt bracket	0° - 5° mechanical

### Ordering information:

MET Version	120330
RET Version	120335

