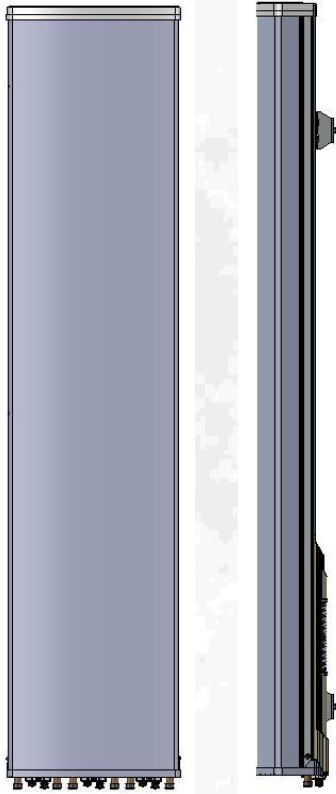


Hex-Port Antenna CMA-UBTLBHH/6516/21/21

XXX-Pol 698-960 / 1710-2690 / 1710-2690



Electrical specification:

| Frequency range per input (MHz) | 2 x 698-960 | | 4 x 1695-2690 | | |
|--|------------------------------|-----------|--------------------------------|-----------|-----------|
| | 698-896 | 880-960** | 1710-1880 | 1920-2170 | 2490-2690 |
| Frequency band definitions (MHz) | | | | | |
| Polarization | Dual linear $\pm 45^\circ$ | | 2 x Dual linear $\pm 45^\circ$ | | |
| Gain (dBi) | 15.6 | 15.8 | 19.3 | 19.6 | 20.8 |
| Horizontal = 3 dB beamwidth ($^\circ$) | 70 | 71 | 67 | 67 | 56 |
| Vertical = 3 dB beamwidth ($^\circ$) | 12.6 | 11.1 | 5.0 | 4.5 | 3.5 |
| Adjustable electrical downtilt | 2° - 12° | | 1° - 10° | | |
| Front to back ratio (dB) | >23 (typical >27) | | >24 (typical >27) | | |
| First upper sidelobe suppression | 2°, 7°, 12° >18, >17, >16 | | 1°, 6°, 10° >15, >17, >13 | | |
| First nullfill below horizon (dB) | - | | <25 | | |
| Cross-polar discrimination +/-0° (dB) | >24 | | >19 | | |
| VSWR | <1.5:1 | | <1.5:1 | | |
| Isolation between inputs (dB) | >28 | | >28 | | |
| Isolation between bands (dB) | | | >28 | | |
| Antenna Efficiency* | 90 % | | 90 % | | |
| Inter modulation, IM3 (dBc) | | | >155 @2x43 dBm | | |
| Nominal impedance | | | 50 Ω | | |
| Max power per input | | | 500 W | | |

Mechanical specification:

| | |
|------------------------------|------------------------------------|
| Connectors | 6 x 4.3 -10 female |
| Connector position | Bottom |
| Lightning protection | DC grounded |
| Height/Width/Depth mm (inch) | 1840 (72.4)/ 420 (16.5)/ 192 (7.6) |
| Antenna weight kg (lb) | 27 (59) |

Wind load at 42 m/s (94 mph)

| | |
|----------|-----------------|
| Frontal: | 843 N (142 lbf) |
| Lateral: | 213 N (48 lbf) |

Survival wind speed

67 m/s

Colour radome

Light Grey, RAL 7035

Radome material

ASA

Mounting hardware:

| | |
|---------------------------|--------------------|
| Mounting bracket | 2 |
| Bracket weight (complete) | 5 kg (11 lb) |
| Pole diameter | 45-120 mm |
| Tilt bracket | 0° - 5° mechanical |

Ordering Information:

| | |
|-------------|--------|
| MET Version | 120320 |
| RET Version | 120325 |