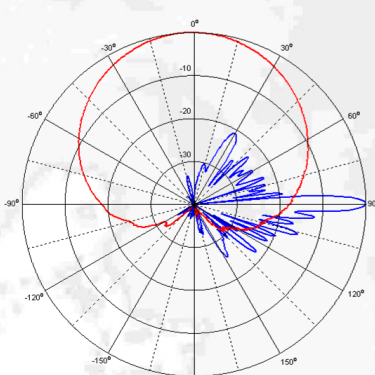
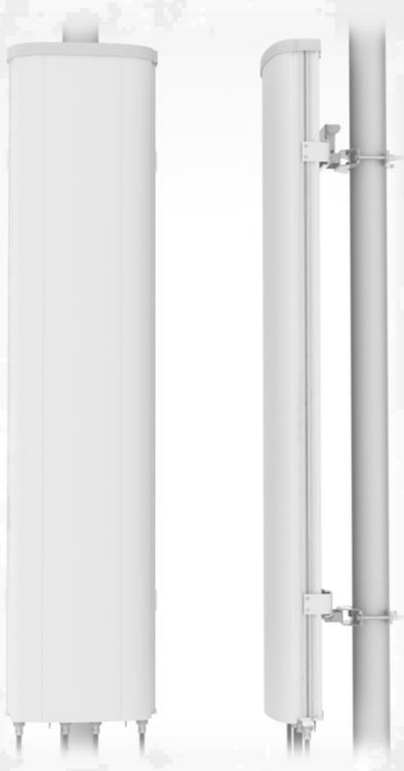


# CMA-BDLL/6521/E0-6 Quad-Port Antenna

## XX-Pol: 2300-2690 / 2300-2690



### Electrical specification:

Frequency range per input (MHz)	2 x 2300-2690			2 x 2300-2690		
	2300-2400	2400-2496	2496-2690	2300-2400	2400-2496	2496-2690
Frequency band definitions (MHz)						
Polarization (°)	Dual linear ±45			Dual linear ±45		
Gain (dBi)	20.1	20.5	21.0	20.1	20.5	21.0
Horizontal = 3dB beamwidth (°) ±4°	65	63	62	65	63	62
Vertical = 3dB beamwidth (°) ±0.3°	4.3	4.1	3.9	4.3	4.1	3.9
Adjustable electrical downtilt (°)	0 - 6			0 - 6		
Front to back ratio +/-30° total power (dB)	>26			> 26		
First upper sidelobe suppression (dB)	0°, 3°, 6° >18, >17, >16			0°, 3°, 6° >18, >17, >16		
First nullfill below horizon (dB)	< 20			< 20		
Cross-polar discrimination +/-0° (dB)	> 20			> 20		
Cross-polar discrimination +/-60° (dB)	> 10			> 10		
VSWR	< 1.5:1			< 1.5:1		
Isolation between inputs (dB)	> 30			> 30		
Isolation between bands (dB)				> 30		
Antenna Efficiency*	> 94 %			> 94 %		
Inter modulation, IM3 (dBc)				<-153 @2x43 dBm, typical <-160		
Nominal impedance (Ω)				50		
Max power per input (W)				500		

### Mechanical specification:

Connectors	4 x 7/16 female
Connector position	Bottom
Lightning protection	DC grounded
Height/Width/Depth mm (in)	1641 (64.6) / 374 (14.7) / 132 (5.2)
Antenna weight kg (lb)	24 (53.3)

Wind load at 42 m/s (94 mph)

Frontal:	552 N (124 lbf)
Lateral:	108 N (24 lbf)
Rear:	695 N (156 lbf)
Survival wind speed	67 m/s (150 mph)
Colour radome	Light Grey, RAL 7035
Radome material	ASA

### Mounting hardware:

Mounting bracket	2
Bracket weight (complete)	5.2 kg (11.5 lb)
Pole diameter	45-120 mm (1.8-4.7 in)
Tilt bracket	0° - 5° mechanical

### Ordering information:

CMA-BDLL/6521/E0-6/MET	110480
CMA-BDLL/6521/E0-6/RET	110485