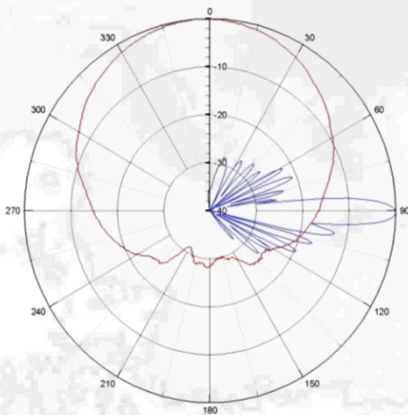
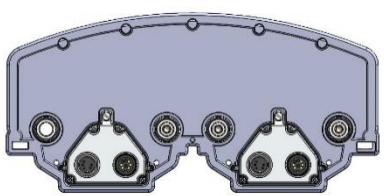
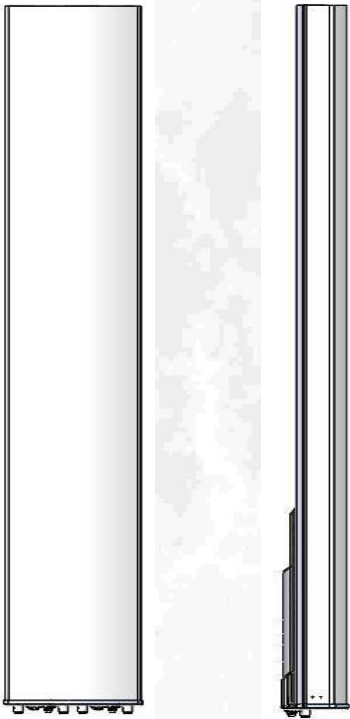


# Quad-Port Antenna CMA-UBDHH/6520/E2-10

## XX-Pol: 1710-2690



### Electrical specification:

Frequency range per input (MHz)	4 x 1710-2690			
	1710 -1880	1920 -2170	2300 - 2400	2490 -2690
Frequency band definitions (MHz)				
Polarization	Dual linear $\pm 45^\circ$			
Gain (dBi)	18.3	18.8	19.4	20.2
Horizontal = 3 dB beam width ( $^\circ$ ) $\pm 3^\circ$	67	62	60	56
Vertical = 3 dB beam width ( $^\circ$ ) $\pm 0.6^\circ$	6.6	5.8	4.9	4.5
Adjustable electrical down tilt ( $^\circ$ )	2 - 10			
Front to back ratio, $\pm 30^\circ$ total power (dB)	>25			
First upper side lobe suppression (dB)	2° >16	6° >14		10° >12
First null fill below horizon, typ. (dB)	<25			
Cross-polar discrimination $+/-0^\circ$ (dB)	> 24			
Cross-polar discrimination $+/-60^\circ$ (dB)	> 10 (for less than $5^\circ$ EDT), > 7.5 worst.			
Nominal impedance ( $\Omega$ )	50			
VSWR	< 1.5:1			
Isolation between inputs (dB)	> 28			
Antenna efficiency*	91 %			
Inter modulation, IM3	<-155 dBc@2x43 dBm (<-160 dBc typical)			
Max power per input	500 W			

### Mechanical specification:

Connectors	4 x 4.3-10 female
Connector position	Bottom
Lightning protection	DC grounded
Height/Width/Depth	1385 mm (54.5 in) / 291 mm (11.5 in) / 135 mm (5.3 in)
Antenna weight	14 kg (31 lbs)
Wind load at 42 m/s (94 mph) :	
Frontal:	363 N (82 lbf)
Lateral:	80 N (18 lbf)
Rear:	456 N (103 lbf)
Survival wind speed	67 m/s (150 mph)
Colour radome	Light Grey, RAL 7035
Radome material	ASA
<b>Mounting hardware:</b>	
Mounting bracket	2
Bracket weight (complete)	5 kg (11 lb)
Pole diameter	45-120 mm (1.8-4.7 in)
Tilt bracket	$0^\circ - 8^\circ$ mechanical

### Ordering information:

CMA-UBDHH/6520/E2-10/4.3-10/MET	120110
CMA-UBDHH/6520/E2-10/4.3-10/RET	120115