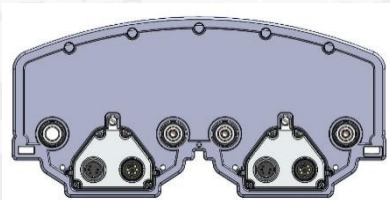
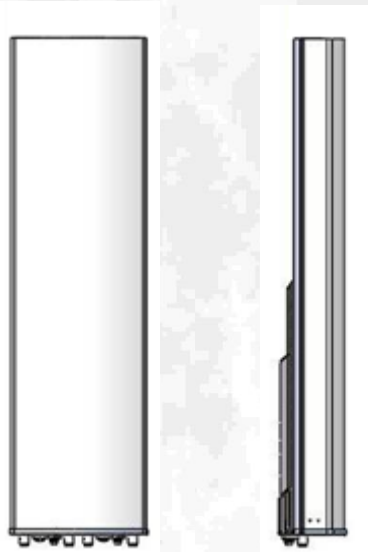


Quad-Port Antenna CMA-UBDHH/6518/E2-10

XX-Pol: 1710-2690



Electrical specification:

	4 x 1710-2690			
Frequency range per input (MHz)	1710 -1880	1920 -2170	2300 - 2400	2490 -2690
Frequency band definitions (MHz)				
Polarization	Dual linear $\pm 45^\circ$			
Gain (dBi)	16.6	17.3	18.0	18.5
Horizontal = 3 dB beam width ($^\circ$) $\pm 3^\circ$	67	62	59	55
Vertical = 3 dB beam width ($^\circ$) $\pm 0.6^\circ$	10	8.8	7.7	6.9
Adjustable electrical down tilt ($^\circ$)	2 - 10			
Front to back ratio, $\pm 30^\circ$ total power (dB)	>25			
First upper side lobe suppression (dB)	2° >17	6° >14		10° >13
Cross-polar discrimination +/-0° (dB)	> 20			
Cross-polar discrimination +/-60° (dB)	> 9			
Nominal impedance (Ω)	50			
VSWR	< 1.5:1			
Isolation between inputs (dB)	> 28			
Antenna efficiency*	92 %			
Inter modulation, IM3	<-155 dBc@2x43 dBm (<-160 dBc typical)			
Max power per input	500 W			

Mechanical specification:

Connectors	4 x 4.3 -10, female
Connector position	Bottom
Lightning protection	DC grounded
Height/Width/Depth	929 mm (36.6 in) / 291 mm (11.5 in) / 135 mm (5.3 in)
Antenna weight	10 kg (22 lbs)
Wind load at 42 m/s (94 mph) :	
Frontal:	243 N (55 lbf)
Lateral:	58 N (13 lbf)
Rear:	306 N (69 lbf)
Survival wind speed	67 m/s (150 mph)
Colour radome	Light Grey, RAL 7035
Radome material	ASA
Mounting hardware:	
Mounting bracket	2
Bracket weight (complete)	5 kg (11 lb)
Pole diameter	45-120 mm (1.8-4.7 in)
Tilt bracket	0° - 10° mechanical

Ordering information:

CMA-UBDHH/6518/E2-10/4.3-10/MET	120100
CMA-UBDHH/6518/E2-10/4.3-10/RET	120105