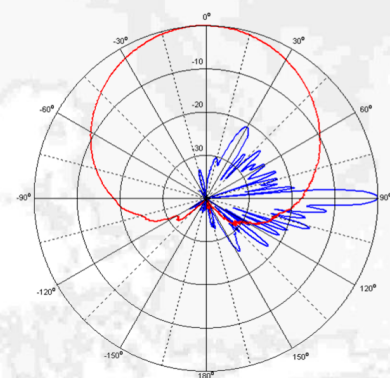
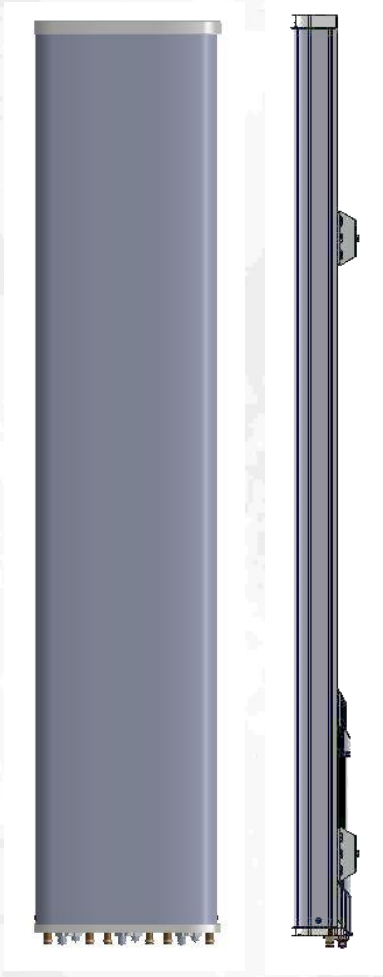


Hex-Port Antenna

CMA-UBDHHH/6521/E1-10

XXX-Pol: 1710-2690



Electrical specification:

Frequency range per input (MHz)	6 x 1710-2690			
Frequency band definitions (MHz)	1710 -1880	1920 -2170	2300 - 2400	2490 -2690
Polarization	Dual linear $\pm 45^\circ$			
Gain (dBi)	19.4	20.0	21.1	21.4
Horizontal = 3 dB beam width ($^\circ$) $\pm 6^\circ$	65	60	60	57
Vertical = 3 dB beam width ($^\circ$) $\pm 0.6^\circ$	4.9	4.3	3.8	3.3
Adjustable electrical down tilt ($^\circ$)	1 - 10			
Front to back ratio, $\pm 30^\circ$ total power (dB)	>25			
First upper side lobe suppression (dB)	1 $^\circ$ >17	6 $^\circ$ >16		10 $^\circ$ >15
First null fill below horizon, typ. (dB rel. peak gain)	<25			
Cross-polar discrimination +/0 $^\circ$ (dB)	> 20			
Cross-polar discrimination +/60 $^\circ$ (dB)	> 7			
Nominal impedance (Ω)	50			
VSWR	< 1.5:1			
Isolation between inputs (dB)	> 28			
Antenna efficiency*	89 %			
Inter modulation, IM3	<-155 dBc@2x43 dBm (-160 typical)			
Max power per input	500 W			

Mechanical specification:

Connectors	6 x 4.3-10 female
Connector position	Bottom
Lightning protection	DC grounded
Height/Width/Depth	1841 mm (72.5 in) / 417 mm (16.4 in) / 135 mm (5.3 in)
Antenna weight	26 kg (57 lbs)
Wind load at 42 m/s (94 mph) :	
Frontal:	691 N (155 lbf)
Lateral:	102 N (23 lbf)
Rear:	869 N (195 lbf)
Survival wind speed	67 m/s (150 mph)
Colour radome	Light Grey, RAL 7035
Radome material	ASA

Mounting hardware:

Mounting bracket	2
Bracket weight (complete)	5 kg (11 lb)
Pole diameter	45-120 mm (1.8-4.7 in)
Tilt bracket	0 $^\circ$ - 5 $^\circ$ mechanical

Ordering information:

CMA-UBDHHH/6521/E2-10/MET	120160
CMA-UBDHHH/6521/E2-10/RET	120165