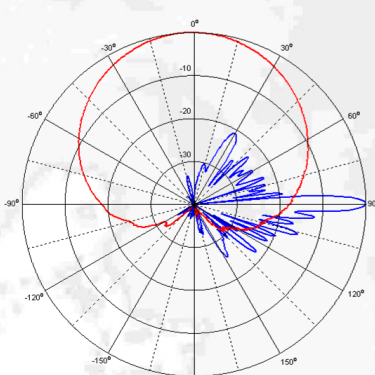
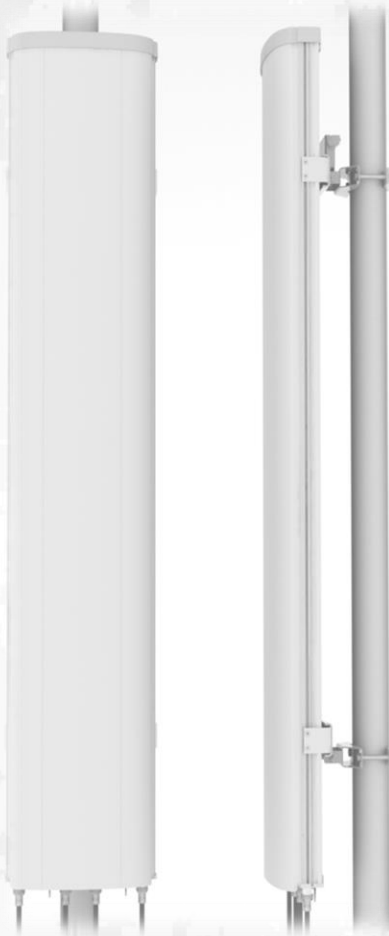


CMA-BDHH/6521/E0-6 Quad-Port Antenna

XX-Pol: 1710-2180 / 1710-2180



Electrical specification:

Frequency range per input (MHz)	2 x 1710-2180			2 x 1710-2180		
	1710-1880	1850-1990	1920-2180	1710-1880	1850-1990	1920-2180
Frequency band definitions (MHz)						
Polarization (°)	Dual linear ±45			Dual linear ±45		
Gain (dBi)	20.2	20.6	21.2	20.2	20.6	21.2
Horizontal = 3dB beamwidth (°) ±4°	65	64	62	65	64	62
Vertical = 3dB beamwidth (°) ±0.3°	4.5	4.2	3.9	4.5	4.2	3.9
Adjustable electrical downtilt (°)	0 - 6			0 - 6		
Front to back ratio +/-30° total power (dB)	>26			> 26		
First upper sidelobe suppression (dB)	0°, 3°, 6° >18, >16, >16			0°, 3°, 6° >18, >16, >16		
First nullfill below horizon (dB)	< 20			< 20		
Cross-polar discrimination +/-0° (dB)	> 20			> 20		
Cross-polar discrimination +/-60° (dB)	> 10			> 10		
VSWR	< 1.5:1			< 1.5:1		
Isolation between inputs (dB)	> 30			> 30		
Isolation between bands (dB)				> 30		
Antenna Efficiency*	> 94 %			> 94 %		
Inter modulation, IM3 (dBc)				<-153 @2x43 dBm, typical <-160		
Nominal impedance (Ω)				50		
Max power per input (W)				500		

Mechanical specification:

Connectors	4 x 7/16 female
Connector position	Bottom
Lightning protection	DC grounded
Height/Width/Depth mm (in)	2060 (81.1) / 374 (14.7) / 132 (5.2)
Antenna weight kg (lb)	28 (61.6)
Wind load at 42 m/s (94 mph)	
Frontal:	694 N (156 lbf)
Lateral:	135 N (30 lbf)
Rear:	873 N (196 lbf)
Survival wind speed	67 m/s (150 mph)
Colour radome	Light Grey, RAL 7035
Radome material	ASA

Mounting hardware:

Mounting bracket	2
Bracket weight (complete)	5.2 kg (11.5 lb)
Pole diameter	45-120 mm (1.8-4.7 in)
Tilt bracket	0° - 5° mechanical

Ordering information:

CMA-BDHH/6521/E0-6/MET	110420
CMA-BDHH/6521/E0-6/RET	110425