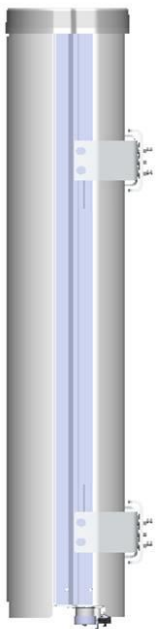
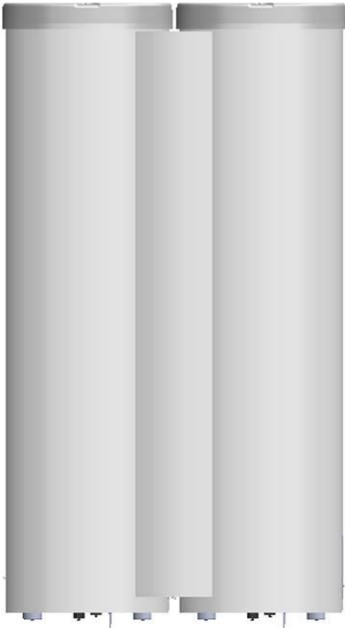


# Preliminary

## CMA-BD/3321/E0-7

### X-Pol: 1800-1900-2100



#### Electrical specification:

	1710-1880	4 x 1710-2180 1850-1990	1920-2180
Frequency range per input (MHz)			
Frequency band definitions (MHz)			
Polarization		Dual linear $\pm 45^\circ$	
Gain (dBi)	19.6	20.0	20.6
Horizontal = 3 dB beamwidth ( $^\circ$ ) $\pm 3^\circ$	34	33	32
Vertical = 3 dB beamwidth ( $^\circ$ ) $\pm 0.8^\circ$	8.8	8.0	7.5
Adjustable electrical downtilt ( $^\circ$ )		0 - 7	
Front to back ratio (dB)		28	
First upper sidelobe suppression (dB)		0 $^\circ$ , 3 $^\circ$ , 6 $^\circ$ 12.5 12 11	
First nullfill below horizon (dB)		30	
Horizontal sidelobe suppression (dB)		> 16	
Cross-polar discrimination +/-0 $^\circ$ (dB)		19.8	
Cross-polar discrimination +/-30 $^\circ$ (dB)		8	
VSWR		< 1.5:1	
Isolation between inputs (dB)		> 28	
Antenna Efficiency*		93 %	
Inter modulation, IM3		< -153 @2x43 dBm	
Inter modulation, IM7		< -163 @2x43 dBm	
Nominal impedance		50 $\Omega$	
Max power per input		500 W	

#### Mechanical specification:

Connectors	4 x 7/16 female
Connector position	Bottom
Lightning protection	DC grounded
Height/Width/Depth mm (in)	1030 (40.6) / 592 (23.2) / 155 (6.1)
Antenna weight	26.5 kg (59 lb)

#### Wind load at 42 m/s (94 mph) :

Frontal:	574 N (130 lbf)
Lateral:	115 N (26 lbf)
Rear:	480 N (108 lbf)

Survival wind speed	67 m/s (150 mph)
Colour radome	Light Grey, RAL 7035
Radome material	ASA

#### Mounting hardware:

Mounting bracket	2
Bracket weight (complete)	7 kg (11 lb)
Pole diameter	45-120 mm (1.8-4.7 in)
Tilt bracket	0 $^\circ$ - 10 $^\circ$ mechanical

#### Ordering information:

CMA-B/3321/E0-7/MET	110520
CMA-B/3321/E0-7/RET	110525